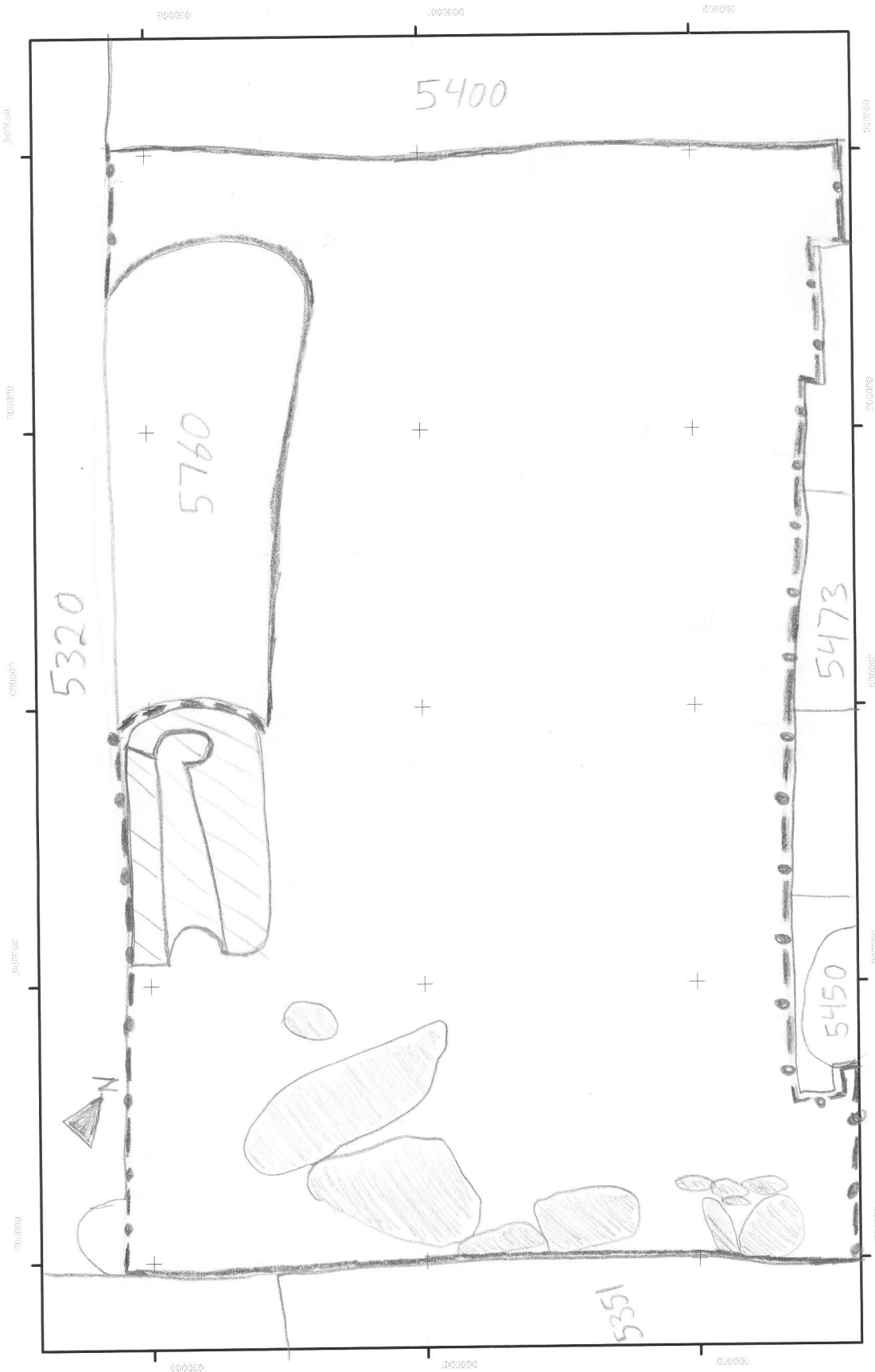


# Gabii Project 2014

SU(s) # 5736 Area F

Your Name Alexandra Creola Date 24/7/2014



\*NB: This is the updated drawing of SU 5736. After excavation began we noted the SU was truncated by a cut (5760) WHICH WAS NOT VISIBLE DUE TO ACCUMULATION BETWEEN THE 2013 AND 2014 FIELD SEASONS. EXCAVATION HAS THUS PAUSED UNTIL 2015 SEASON. THE STAKES IN THE SOUTH AND WORKED STAKES IN WEST WERE EXPOSED AFTER EXCAVATION BEGAN.

-  = Stone
-  = Worked Stone